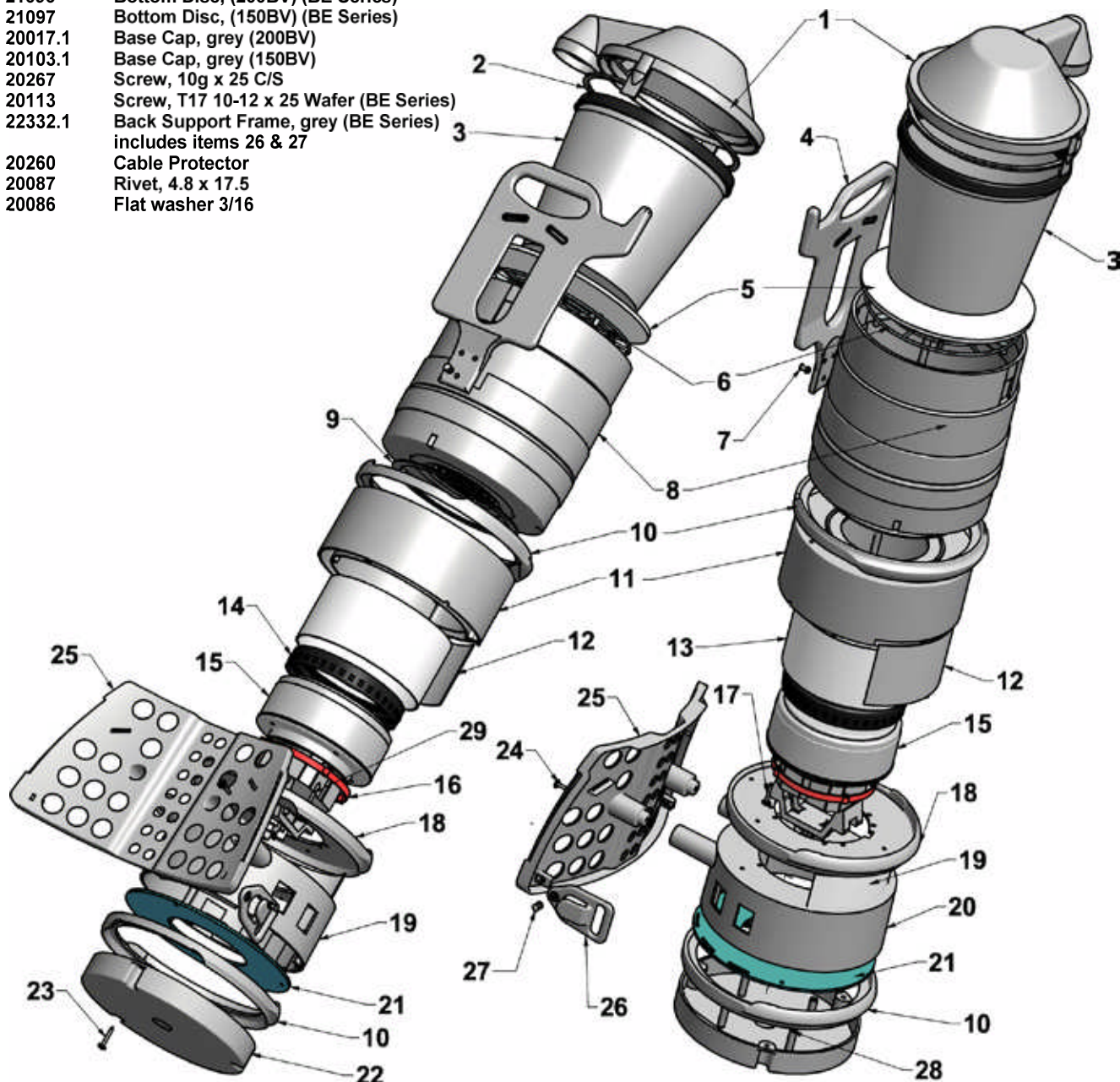


150BV & 200BV BE Series

Item	Part No	Description
1	20090.06	Inlet Cover Assy, blue (200BV) incl item 2
	20090.11	Inlet Cover Assy, red (150BV) incl item 2
2	20291	Gasket, Inlet Cover
3	20003	Cloth Filter Bag
4	20119.1	Carry Handle, Grey
5	20188	Filter Disc
6	20091	Filter Bag Support Stand
7	20089	Rivet, alu sealed
8	20192.06	Canister, blue (200BV) incl item 9
	20192.09	Canister, red (150BV) incl item 9
9	20100	Gasket, Canister
10	21008.00	Bumper, Grey (BE Series)
11	20382.02	Fan Shroud, Grey
12	20184	Insulation, top (short)
13	20185	Insulation, top (long) (200BV)
14	20097	Motor Suspension Ring 6mm (suit motors 10002 & 10004)
	20110	Motor Suspension Ring 9mm (suit motor 10003)
15	10002	1100W Motor By-pass (200BV)
	10003	1300W Motor Flo-thru (150BV) (stepped fan housing)
	10004	1300W Motor Flo-thru (150BV)
16	22320	8mm Spacer (150BV) (BE Series)
17	20268	Screw, 10# x 5/8 pan (200BV)
	20113	Screw, T17 10-12 x 25 Wafer (150BV) (BE Series)
18	21009.00	Bumper MSD, Grey (BE Series)
19	20135	Insulation, Lower (150BV) (BE Series)
20	20384.36	Motor Shroud, Grey (with Receptacle hole) (BE Series)
	20384.35	Motor Shroud, Grey (without receptacle hole) (BE Series)
21	21096	Bottom Disc, (200BV) (BE Series)
	21097	Bottom Disc, (150BV) (BE Series)
22	20017.1	Base Cap, grey (200BV)
	20103.1	Base Cap, grey (150BV)
23	20267	Screw, 10g x 25 C/S
24	20113	Screw, T17 10-12 x 25 Wafer (BE Series)
25	22332.1	Back Support Frame, grey (BE Series) includes items 26 & 27
26	20260	Cable Protector
27	20087	Rivet, 4.8 x 17.5
	20086	Flat washer 3/16





150BV & 200BV BE Series

Item	Part No	Description
30	20122	Shoulder Pad Assembly, incl item 31
	20120	Shoulder Pad Assembly with screw on kit (incl item 31)
31	20121	Secondary Shoulder Pad Set
32	21335	Waist Support Band RHS, w/Velcro (BE Series)
33	21336	Waist Support Band LHS (BE Series)
34	21337	Shoulder Adjustment Strap (pair) (BE Series)
37	10293	Deluxe Combination Floor Tool
38	10116	Extension Wand Stainless Steel
39	10113	Deluxe Blk/Grey Hose Assembly 32mm x 1.2M includes items 40, 41 and 42
40	10105	Swivel Cuff
41	10118	Deluxe Pistol Grip, includes screw on hull & clip ring
42	10106.1	Blk/Grey Hose 32mm x 1.2M
44	20160	Paper Bag Ring
	20190	Packet of 10 Open style Paper Bags, includes item 44
45	20202	15M Power Cord IEC R/A F Plug
47	60132	Carbon Brush with holder, Suit Domel By-pass, set of 2
	60135	Carbon Brush with holder, Suit Domel Flo-Thru, set of 2
48	20204	Switch Wire Assembly, brown, R/A
49	20068	Receptacle Wire Assembly, white)
50	20203	IEC C18 M Inlet
51	20015	Power Brush Receptacle
52	20044	Switch

